

Similarity Estimation among OWL Descriptions of Computational Cardiology Problems in a Knowledge Base

Ch Bratsas¹, IS Hatzizisis¹, P Bamidis¹, P Quaresma², N Maglaveras¹

¹Aristotle University, Thessaloniki, Greece

²University of Evora, Evora, Portugal

Abstract

The purpose of this study is to evaluate ontologies in order to achieve an efficient search of Medical Computational Problems in cardiology (MCP). These ontologies provide the ability to standardize the description process of cardiology problems and algorithms by utilizing Ontology Web Language – Description Logic (OWL-DL). The final aim is to build a Knowledge Base (KB) from the OWL descriptions of the MCPs. The identification of a new cardiology problem or related to this problem included in KB is proposed to be conducted by cosine-based similarity. A novel algorithm that constructs the MCPs vectors from the ontology individuals is presented. These vectors are defined by a matrix based on problems, Concept Unique Identifier (CUI) Keywords and CUI Categories. The CUIs are automatically received by the Unified Medical Language System Knowledge Server (UMLS-KS) and stored into ontologies. Finally, an example where twelve cardiology problems vectors are constructed from the corresponding individuals of the ontology classes is presented and analyzed.

1. Introduction

Computer cardiology research is an established knowledge engineering that has allowed researchers to identify new or significant problems, better understand the existing approaches and experimental results and obtain new, effective and efficient solutions. Some questions that researchers are familiar with include: How does one determine a new problem? Do similar or related problems exist? Is there any algorithm that solves such problem? Has the solving algorithm of the problem been implemented ever? Are there any relative publications or references?

The Answer of these questions requires literature searches in libraries and digital archives, but the scattered and the poorly organized information that exists in these sources, is considered a barrier to knowledge acquisition. It is believed that this inefficient procedure can be

improved through a Knowledge Base System (KBS) based on advanced information technology.

Ontologies provide a structured framework for modeling the concepts and the relationships of some domain of expertise. Particularly, ontologies support the creation of repositories of domain-specific reference knowledge or knowledge for communication and sharing among people and applications [1]. In previous work [2] Resource Description Framework (RDF) [3] was used to accomplish a simplistic framework for the ontological description of Medical Computational Problems (MCPs) and the algorithms that solve them.

In this piece of work, this framework is further expanded with the use of Ontology Web Language (OWL) [4] in order to facilitate the description process of the users and the algorithms' implementations. Moreover, an innovative algorithm that constructs the problem vectors from the ontology individuals has been built. These vectors are used to calculate the similarity of the problems in order to achieve an efficient search in a KB and to help the knowledge problems authors to identify if a problem already exists in the KB.

2. MCP ontology

The MCP ontology is an OWL ontology model that manages the MCPs by means of organizing and visualizing their existing knowledge. MCPs are medical problems, the solution of which deals with mathematical or statistical models, signal or image processing and estimation of corresponding parameters. The tool Protégé [5] with its OWL plug-in [6] was used to build the MCP Ontology. In order to achieve concept consensus, a standardized medical terminology, the Unified Medical Language System (UMLS) developed by the US National Library of Medicine [7] was utilized. To describe MCP references in a structured manner, the BibTex OWL-Ontology [8] was adjusted into the MCP Ontology.

The user space and three computational spaces namely the medical problem, its solution and its implementation are proposed in order to provide a detailed and accurate description of the MCP Ontology (Fig 1). The problem space consists of medical computational problems; the

solution space is composed of algorithm solutions, whereas the implementation space objects assist in carrying out the solutions. The user space objects consist of the users and their different capabilities.

In order to correlate the above computational spaces between each other the inverse property is used. More specifically, the `hasTargetProblem` property is stated to be the inverse of the `hasExistingSolution` property, and the `hasTargetSolution` property is stated to be the inverse of the `hasImplementations` property. The first relation is used to associate the problem space with the solution space, whereas the second relation is used to associate the solution space with the implementation space. Thus, if *X* is related to *Y* by the `hasTargetProblem` property or `hasTargetSolution` property, then *Y* is related to *X* by the `hasExistingSolutions` property or `hasImplementations` property respectively. These relations are used to answer the following questions: Is there any algorithm that solves this problem? Is the algorithm solving the problem implemented?

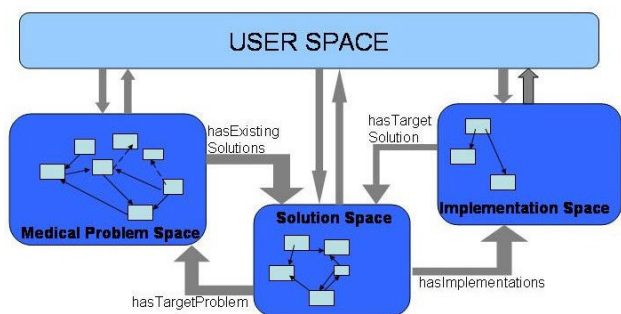


Figure 1: MCP Ontology.

The estimation of similarity among MCPs is based on the instances of the MCP ontology problem space. The main class of the problem space is the MCP class. Figure 2 shows in a table the properties that associate this class with other classes. In addition, the significance of each association is given in the same table.

Knowledge Objects as domain Classes	Properties that links the individuals between two classes	Linking Classes	Meaning
MCP class - main class of MCP space	<code>hasDescribesby</code>	Knowledge Author	By whom the MCP is described
	<code>hasExistingSolutions</code>	Algorithm	Which is MCP's solution
	<code>hasMCPProfile</code>	Profile	Name, Language, Date, Description, Modification, References. Reference is based on BibTex Ontology.
	<code>hasMedicalConcepts</code>	Medical Keyword	Every Medical Concept is a MCP Keyword which has UMLS Description
	<code>hasCategory</code>	Category	Every MCP belongs to one category, which has UMLS description

Figure 2: The problem space of the MCP ontology.

The Object Properties `hasMedicalConcepts` and `hasCategory` are the inverse properties of the `hasMCPProblem` and `hasReferredMCP` properties correspondingly. Thus, the instance of the `MedicalKeyword` class shows the keywords that belong in any MCP, and the instance of the `Category` class illustrates the category/ies in which a MCP belongs.

3. Vector constructing algorithm

To construct the MCPs vectors sets *P*, *K*, *C* are defined. The MCPs set $P = \{p_1, p_2, \dots, p_n\}$, where *n* is the number of MCPs in the KB, contains all the instances (`<MCP rdf:ID="ProblemID">`) of the MCP class. The set $K = \{k_1, k_2, \dots, k_m\}$, where *m* is the number of keywords, includes the Concept Unique Identifiers (CUIs) of the keywords, and the set $C = \{c_1, c_2, \dots, c_z\}$, where *z* is the number of categories, includes the CUIs of the categories. The CUIs are received by the `UMLS_Root` class.

The function $f(i,j,z)$ is defined to be equal to one when Problem *i* of set *P* belongs to Category *z* of set *C* and Keyword *j* of set *K* belongs to Problem *i* of set *P*, and equal to zero otherwise (equation 1). The above function is constructed by the instances of the `MedicalKeyword` class and the `Category` class.

$$f(i,j,z) = \begin{cases} 1, & \text{if } (P_i \in C_z) \wedge (K_j \in P_i) \\ 0, & \text{if } (P_i \notin C_z) \vee (K_j \notin P_i) \end{cases} \quad (1)$$

The matrix P_{ijz} , of $n \times m \times z$ dimension, includes the MCPs vectors existing in KB. For instance, the *i* row corresponds to the MCP_i vector \vec{P}_i that belongs to Category *z*. The elements of the matrix P_{ijz} are computed by the equations 2,3,4.

$$P_{ijz} = \begin{cases} ws_j, & \text{if } f(i,j,z)=1 \\ 0, & \text{if } f(i,j,z)=0 \end{cases} \quad (2)$$

$$ws_j = \frac{n_c - (\text{Freq}(K_j) - 1)}{n_c} \quad (3)$$

$$\text{Freq}(K_j) = \sum_{i=1}^n f(i,j,z=c) \quad (4)$$

The MCPs description is rather short, since every MCP is clearly defined by Expert Users within a paragraph of 3 or 4 lines. So, the keywords are not repeated frequently and as a result every Medical Concept of a MCP description is of equal importance as a keyword. The ws_j corresponds to the weight of the keyword in a particular problem in a specific Category. The ws provides the keyword with its sparsity and is calculated from equation (2). In this equation n_c represents the number of MCPs

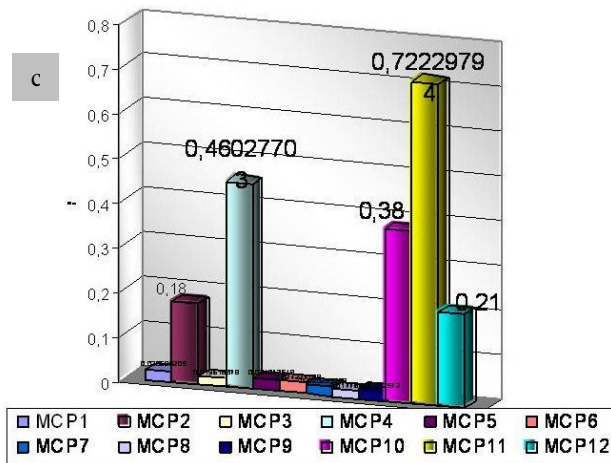


Figure 4:a) Matrix of twelve MCPs and their Keywords (CUIs) b) MCPs and Quersted MCP Vectors c) Similarity among Quersted MCP and MCPs.

The twelve above MCPs as well as their algorithms were originated by the Institute of Medical Algorithms. For more than eight years, the institute has collected and processed over 4,000 algorithms, including about 200 cardiology-specific algorithms that are available on the following URL www.medal.org [10].

The queried MCP is: "Identification of right ventricular hypertrophy when mitral stenosis is present", with Keywords: ECG, Hypertrophy, RVH, Heart Ventricle, mitral stenosis, stenosis. The number of the Keywords is $m=24$, whereas the Keywords stenosis and mitral stenosis are not included in the set of Keywords K . Thus, in the 12 vectors of the cardiologic MCPs 2 extra zero elements are added, while the rest of the elements are calculated using the equations (2),(3),(4) (figure 3b). For example, the ws_8 (Keyword "Hypertrophy") is 0.75

$$\text{Freq}(K_8) = \sum_{i=1}^{12} f(i,8,1) = 4 \text{ and } ws_8 = \frac{12 - (4 - 1)}{12} = \frac{9}{12} = 0.75$$

The most similar MCP is MCP11: "Identification of right ventricular hypertrophy", which has similarity 0.722 (figure 3c). The Knowledge Problem Author decides that the queried MCP is not included in the KB. So, it is inserted in the KB.

6. Conclusions

The research in question deals with the construction of ontologies that describe MCP using OWL. The aim of this work is to provide better MCP search capabilities, by introducing and exploiting cosine based similarity. This approach inherits the benefits of UMLS, which standardizes the medical terminology. The UMLS was employed as well as the MCP ontology for the search processing, during which the similarity among the MCPs and the queried MCP vectors was presented by an

example. Moreover, the algorithm that constructed the above vectors was presented.

The final aim of this project is to build a Medical Computational Problem Solving Knowledge Portal. This Portal will constitute a Problem Solving Environment (PSE) which will provide all the computational facilities necessary to solve a target class of Medical Problems. Thus, Medical Scientists and Algorithm Scientists will be able to organize and perform MCP Solutions. This portal could be used in clinical research or more broadly in Medical research, by providing existing solutions of MCPs. Moreover, it could be utilized as a Problem Based Learning tool or as a collaborative learning tool, by providing the knowledge of the MCP.

References

- [1] Davies J, Fensel D, Harmelen F, Towards the semantic web, Ontology-driven Knowledge Management, Wiley & Sons Ltd, (2003)
- [2] Ch Bratsas, P Quaresma, G Pangalos, N Maglaveras, Using Ontologies to Build a Knowledge Base of Cardiology Problems and Algorithms, In Proc. of Computers in Cardiology, IEEE Comp. Soc. Press, (2004), 31, 609-612
- [3] Ora Lassila and Ralph R.Swrick, Resource Description Framework (RDF) Model and Syntax Specification Feb 1999.
- [4] World Wide Web Consortium. OWL Web Ontology Language Semantics and Abstract Syntax. W3C Recommendation 10 Feb, 2004.
- [5] Protégé an ontology tool, <http://protege.stanford.edu>
- [6] H. Knublauch, M. A. Musen, and A. L. Rector. Editing description logics ontologies with the Protégé OWL plugin. In International Workshop on Description Logics, Whistler, BC, Canada, 2004.
- [7] Unified Medical Language System UMLS <http://www.nlm.nih.gov/research/umls/>
- [8] BibTex Definition in Web Ontology Language (OWL) Version 0.1 (2004). <http://visus.mit.edu/bibtex/0.1/>.
- [9] Jena A Semantic Web Framework for Java. <http://jena.sourceforge.net/>
- [10] Svirbely J, Sriram MG. MEDAL, a compendium of medical algorithms for access over the Internet. Proc AMIA Symp. 1999;p1172..

Acknowledgements

This work has been supported by PROMESIP and IRAKLITOS both funded by the Greek Ministry of Education (EPEAK I-II), as well as, by a grant from Greek State Scholarship.

Address for correspondence.

Charalampos Bratsas
Aristotle University of Thessaloniki.
Lab of Medical Informatics, POB 323
Thessaloniki, 54124 Greece.
E-mail: mpampis@med.auth.gr