

Two Approaches for Inverse PVC Localization from Clinical ECG Data Using Heart Surface Potentials

Jana Svehlikova¹, Nika Rasoolzadeh², Beata Ondrusova^{1,3}, Peter Hlivak⁴, Yesim Serinagaoglu Dogrusoz²

¹Institute of Measurement Science SAS, Bratislava, Slovakia

²Middle-East Technical University, Ankara, Turkey

³Faculty of Electrical Engineering and Information Technology, Slovak University of Technology in Bratislava, Bratislava, Slovakia

⁴National Institute for Cardiovascular Diseases, Bratislava, Slovakia

Abstract

The standard approach for the inverse problem of ECG computes the potentials on the epicardial or endo-epicardial surface. For localization of premature ventricular contractions (PVC), the point with the earliest activation time is considered the PVC origin. A point potential approach assumes that at the beginning of the PVC signal, only a small area of the ventricles is activated.

The inverse localization of the PVC origin using a homogeneous and inhomogeneous torso and two methods (standard and point) for epicardial potentials was performed on the measured body surface potential maps of ten patients. The true PVC location and the patient-specific torso geometry from the CT scan were known. The localization error (LE) between estimated and true PVC origins for both methods was evaluated and compared.

For the homogeneous torso and the standard method, the mean LE was 37.2 ± 15.9 mm and 37.6 ± 17.8 mm for epicardial and endo-epicardial surfaces, respectively. The corresponding values for the point method were 25.6 ± 10.5 mm and 31.2 ± 16.5 mm. For the inhomogeneous torso and the standard method, the mean LE was 38.6 ± 18.9 mm and 31.3 ± 11.1 mm. The mean LE improved to 27.6 ± 7.2 mm and 29.5 ± 9.6 mm, respectively, for the point method.

The assumption of a single-point equivalent electrical generator improved the LE for PVC origin localization.

1. Introduction

Heart surface potential distribution is one of the forms of equivalent electrical generator searched in the inverse solution of electrocardiography. It is also used to assess the position of the starting an undesired electrical activity called premature ventricular contraction (PVC). This technique has been applied to simulated [1], [2] and clinical data [3].

A different approach to finding the PVC origin

represents the method using a geometrical constraint based on the apriori knowledge that the PVC starts in a single area of the ventricles. Therefore, a single-point equivalent electrical generator is assumed, usually as a single dipole [4].

Recently, the potential-based and single dipole methods were applied to body surface potential maps (BSPMs) measured on the patients with PVC and compared [5]. The present study assumed a single-point potential as the equivalent heart generator instead of a single dipole. The localization error (LE) between the estimated PVC origin and its true position was evaluated and compared for potential-based and single-point potential methods.

2. Materials and Methods

2.1. Patients

In cooperation with the National Institute for Cardiovascular Diseases in Bratislava, ten patients with spontaneous premature ventricular contraction (PVC) indicated for radiofrequency ablation (RFA) underwent a body surface potential mapping procedure. There were eight men and two women, with a mean age of 49 years (17-72). The successful RFA was performed in RVOT for six patients, in the left ventricle for two patients, and for two patients in the right ventricle or septum, respectively. All patients signed the written consent with the procedure.

2.2. Measurements

ECG was measured by 128 electrodes placed on the patient's torso in 16 vertical strips with 8 electrodes. The signal was recorded with the sampling frequency of 1 kHz using the ProCardio8 measuring system developed in the Department of Biomeasurements [6], Institute of Measurement Science, Bratislava. The recording duration

varied from 5 to 20 minutes for each patient. The measured ECG signal was first filtered by a high-pass filter designed by Blackmann-Harris [7]. Then, the ECG cycles were identified according to their R-peaks and clustered to normal and PVC morphology. The averaged signal from the PVC cluster was computed and used as an input for an inverse solution.

Following the BSPM procedure, a CT scan was performed on the patient's chest with the electrodes still placed on the torso. The scan was later used to create the 3D patient's specific geometrical model.

2.3. Inverse solutions

The usual potential-based inverse solution finds the potential distribution on the whole epicardium or endo-epicardium in each time step of the PVC signal.

The potentials on the torso can be computed from epi or endo-epicardial surface potentials as:

$$y(t) = Ax(t) + v(t), \quad t = 1, 2, 3, \dots, T \quad (1)$$

where $x(t) \in N \times 1$ are the heart surface potentials and $y(t) \in M \times 1$ are the corresponding BSPMs at time instant t ; $A \in M \times N$ is the forward transfer matrix, and $v(t)$ represents a noise in the measurements. The transfer matrix A between the potentials on the heart surface and the torso was computed using a boundary element method.

The unknown heart potentials are computed from the known measured BSPMs using the equation (1):

$$x(t) = \underset{x(t)}{\operatorname{arg\,min}} \{ \|Ax(t) - y(t)\| + \lambda_t^2 \|Lx(t)\| \} \quad (2)$$

where λ_t is a regularization parameter that controls the tradeoff between the residual norm $\|Ax(t) - y(t)\|$ and the constraint norm $\|Lx(t)\|$, and L is a regularization matrix based on the chosen constraint. In this study, L is chosen to be the identity matrix (zero-order Tikhonov regularization method).

From the computed heart potential, the activation time (AT) is derived from the potential course in each point of the heart surface by the spatiotemporal method (spTemp). The point with the minimal AT value is considered the PVC's origin.

The method that assumes a geometrical constraint of the heart sources works with the same equation (1). However, it works with different presumptions instead of regarding the whole PVC time interval in BSPMs and reconstructing the potential distribution on the whole heart surface. First, PVC starts in a single point/area of the ventricles. Second, during the initial QRS time interval, the activated area around the PVC origin is small. Third, a single-point equivalent electrical generator can represent such a small area. This approach has been used in the localization of PVC origin by an inverse solution using a single dipole.

This study's geometrical constraint is analogical to the single dipole approach. The point with a heart potential leading to the torso potentials with the best agreement with the measured BSPM was chosen for each time step. The agreement between the measured and computed BSPM on the torso was evaluated by a relative residual error (RRE):

$$RRE(t) = \frac{\|measBSPM(t) - compBSPM(t)\|}{\|BSPM(t)\|} \quad (3)$$

The point with minimal RRE value from all heart surface positions and all time steps from the early QRS time interval up to 30 ms was considered as the estimated PVC origin. This method will be referred to as a point potential method (pointPot).

The true position of the PVC origin was estimated manually on the endo-epicardial ventricular model by a physician using the results of the successful RFA procedure. The Euclidean distance (localization error LE) between the true PVC origin and the estimated origin by one of the inverse methods was used for quantitative evaluation of the method. The results obtained by spTemp and pointPot methods were compared.

3. Results

For each patient, two types of the heart surface were modeled. The epicardial surface had a closed convex shape surrounding the ventricular cavities. The endo-epicardial surface was a closed concave shape representing only the ventricular myocardium with ventricular cavities out of it.

Regarding the torso model, the results were computed either for a homogeneous torso or for the inhomogeneous torso, where a different conductivity of some inner organs like lungs and ventricles was considered. The conductivity of the lungs was assumed to be four times lower, and of the blood in cavities three times higher than the conductivity of the torso (Figure 1).

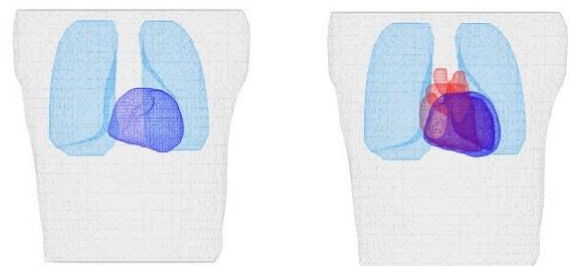


Figure 1. Heart-torso setup for inhomogeneous torso case. Left – for epicardial surface; right - for endo-epicardial surface.

In the inhomogeneous case and the epicardium surface, the presence of the lungs was assumed between the heart and torso surface. In the inhomogeneous case and endo-epicardium surface, the ventricular cavities, together with

the lungs, were included in the computation of the transfer matrix, as depicted in Figure 2. The results for both methods and all considered torso setups are summarized in Table 1 and Table 2.

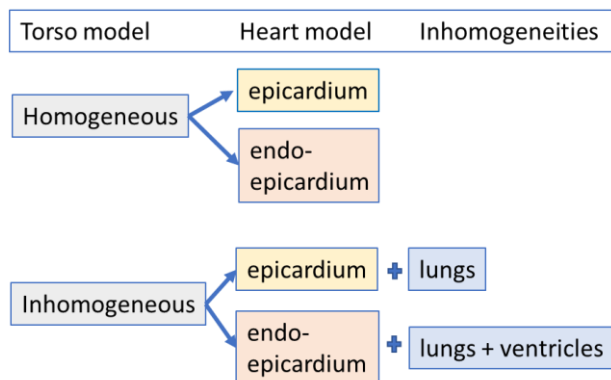


Figure 2. Four heart-torso setups assumed in each inverse method.

Table 1. LE in [mm] of the inverse methods for the homogeneous torso.

pat	epicardial		endo-epicardial	
	spTemp	pointPot	spTemp	pointPot
P1	27.9	24.9	29.2	68.3
P2	58.2	29.0	55.2	30.6
P3	20.4	25.0	23.0	24.2
P4	20.0	29.8	12.1	28.0
P5	59.2	29.1	49.2	26.2
P6	16.5	38.9	23.3	34.0
P7	42.1	17.4	53.7	38.9
P8	36.2	17.4	56.5	18.6
P9	51.9	39.7	19.1	38.6
P10	39.9	4.7	55.1	4.4

Table 2. LE in [mm] of the inverse methods for the inhomogeneous torso.

pat	epicardial		endo-epicardial	
	spTemp	pointPot	spTemp	pointPot
P1	27.7	27.9	29.2	21.8
P2	51.6	25.1	40.6	33.6
P3	20.8	22.0	19.1	22.8
P4	20.0	29.8	28.6	30.1
P5	40.7	32.6	39.6	22.3
P6	16.5	33.0	23.4	34.0
P7	42.0	21.5	49.8	32.1
P8	78.5	30.7	20.5	29.5
P9	51.9	39.7	19.2	51.5
P10	36.4	14.1	42.9	17.4

The results when the LE for the pointPot method was smaller or comparable with the spTemp method are highlighted in bold font. For the epicardial heart surface,

more than half of the pointPot method's results improved compared to the standard method, and for the endo-epicardial surface, the LE was better for 5 out of 10 cases. The improvement of the LE for pointPot method is also visible in the graphs in Figure 3 and Figure 4.

The mean LE decreased from 37.2 ± 15.9 mm to 25.6 ± 10.5 mm for homogeneous torso and epicardial surface. If the endo-epicardial surface was considered in the homogeneous torso, the mean LE decreased from 37.6 ± 17.8 mm to 31.2 ± 16.5 mm. In the inhomogeneous torso and epicardial surface, the mean LE decreased from 38.6 ± 18.9 mm to 27.6 ± 7.2 mm, and for the endo-epicardial surface, the mean LE decreased from 31.3 ± 11.1 mm to 27.0 ± 8.1 mm.

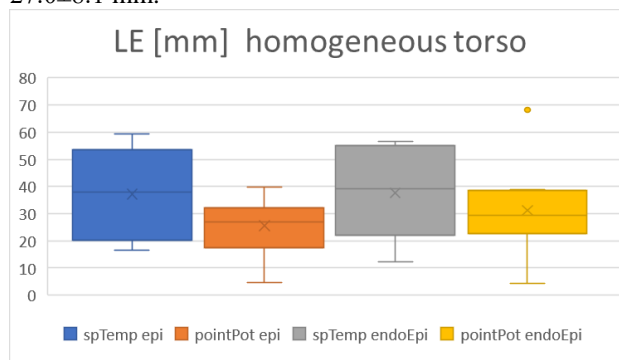


Figure 3. Box plots of LE of the PVC estimation for ten patients for a homogeneous torso model assuming closed epicardial or endo-epicardial surface of the ventricles using standard spTemp and alternative pointPot inverse method.

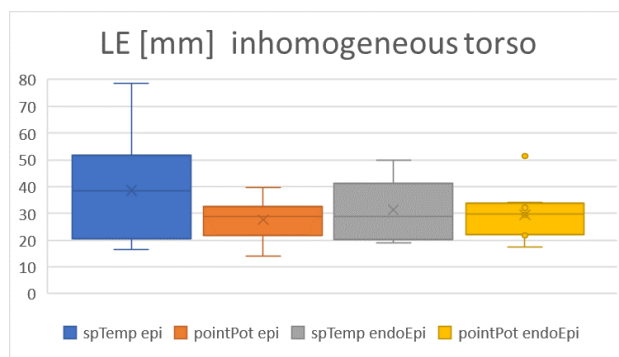


Figure 4. Box plots of LE of the PVC estimation for ten patients for an inhomogeneous torso model assuming closed epicardial or endo-epicardial surface of the ventricles using standard spTemp and alternative pointPot inverse method.

4. Discussion and Conclusion

This study compared two approaches for assessing the PVC origin using the heart surface potential in an inverse solution of electrocardiography. Both used the presumption that the PVC starts in a single ventricle area. The first was based on finding the earliest AT from the inversely computed time course of the heart surface

potential, and the second was based on finding a single point potential best approximating the measured BSPM within the starting PVC time interval up to 30 ms. Such an assumption was used in our previous studies [8] using a single dipole as an equivalent heart generator. The geometrical constraint in inverse localization of the PVC origin was also investigated for various equivalent electrical heart generators on the simulated data in [9]. It was shown there that the models of a single point equivalent heart generator led to similar LE of the inverse results.

According to the results of this study, the LE of the second method outperformed the method based on the AT. The mean LE was smaller for all four heart-torso setups. However, for endo-epicardial surface, one outlier appeared in homogeneous and also in inhomogeneous cases. Similar findings were obtained on these data comparing the spTemp method with the inverse method using a single dipole published in [5]. This observation may be attributed to the numerous steps needed in the spTemp method with the assessment of multiple parameters: order of the Tikhonov regularization, λ parameter, smoothening of the computed time course of the heart potential, finding the AT. On the other hand, while the pointPot method assesses only the origin of PVC activation, spTemp method gives more complex information about the potential distribution on the heart surface.

However, the geometrical constraint of the ventricular activation related to the starting time interval of the ECG signal appears to be very helpful a priori information for the PVC origin assessment.

Acknowledgements

This work was supported jointly by TŮBĪTAK (grant no:120N200) and SAS (grant no: 536057) projects and by the research grant 2/0109/22 from the VEGA Grant Agency.

References

- [1] D. Potyagaylo, O. Dossel, and P. Van Dam, "Influence of modeling errors on the initial estimate for nonlinear myocardial activation times imaging calculated with fastest route algorithm," *IEEE Trans Biomed Eng*, vol. 63, no. 12, pp. 2576–2584, 2016, doi: 10.1109/TBME.2016.2561973.
- [2] S. Schuler *et al.*, "Reducing line-of-block artifacts in cardiac activation maps estimated using ECG imaging: A comparison of source models and estimation methods," *IEEE Trans Biomed Eng*, vol. 69, pp. 2041–2052, 2021, [Online]. Available: <http://arxiv.org/abs/2108.06602>
- [3] B. Erem, J. Coll-Font, R. M. Orellana, P.

- St'ovicek, and D. H. Brooks, "Using transmural regularization and dynamic modeling for noninvasive cardiac potential imaging of endocardial pacing with imprecise thoracic geometry," *IEEE Trans Med Imaging*, vol. 33, no. 3, pp. 726–738, 2014, doi: 10.1109/TMI.2013.2295220.
- [4] J. Svehlikova *et al.*, "The importance of ECG offset correction for premature ventricular contraction origin localization from clinical data," no. x, pp. 1–7, 2022, doi: 10.2478/msr-2022-00xx.
- [5] Y. S. Dogrusoz *et al.*, "Comparison of dipole-based and potential-based ECGI methods for premature ventricular contraction beat localization with clinical data," *Front Physiol*, vol. 14, Jun. 2023, doi: 10.3389/fphys.2023.1197778.
- [6] J. Kadanec, J. Zelinka, G. Bukor, and M. Tysler, "ProCardio 8-System for high resolution ECG mapping," *2017 11th International Conference on Measurement, MEASUREMENT 2017 - Proceedings*, pp. 263–266, 2017, doi: 10.23919/MEASUREMENT.2017.7983586.
- [7] F. J. Harris, "On the use of windows for harmonic analysis with the discrete Fourier transform," in *Proceedings of the IEEE*, 1978, pp. 66(1), 51–83.
- [8] J. Svehlikova and M. Tysler, "Inverse localization of intraventricular pacing sites by equivalent dipole source," *Comput Cardiol (2010)*, vol. 44, pp. 1–4, 2017, doi: 10.22489/CinC.2017.058-404.
- [9] J. Svehlikova, M. Teplan, and M. Tysler, "Geometrical constraint of sources in noninvasive localization of premature ventricular contractions," *J Electrocardiol*, vol. 51, no. 3, pp. 370–377, 2018, doi: 10.1016/j.jelectrocard.2018.02.013.

Address for correspondence:

Jana Svehlikova
 Institute of Measurement Science,
 Slovak Academy of Sciences
 Dubravska cesta 9,
 84104 Bratislava, Slovakia
jana.svehlikova@savba.sk